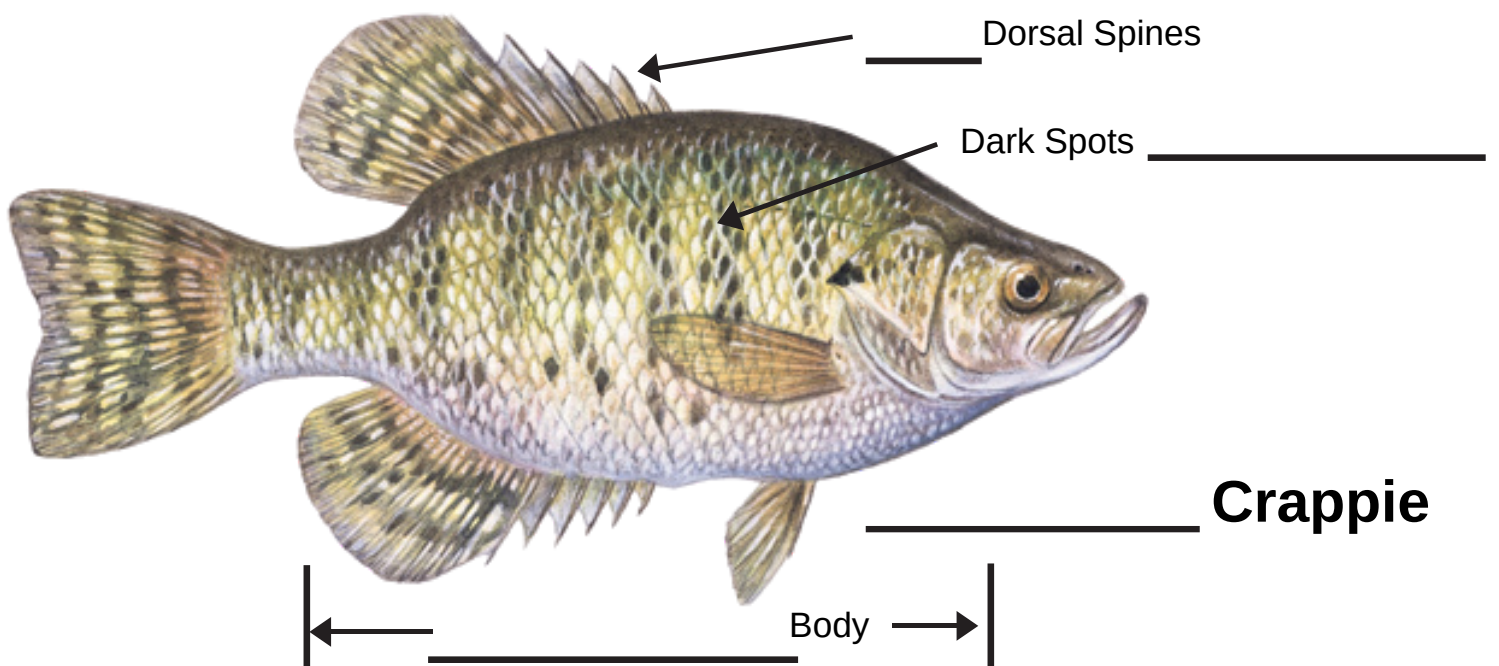
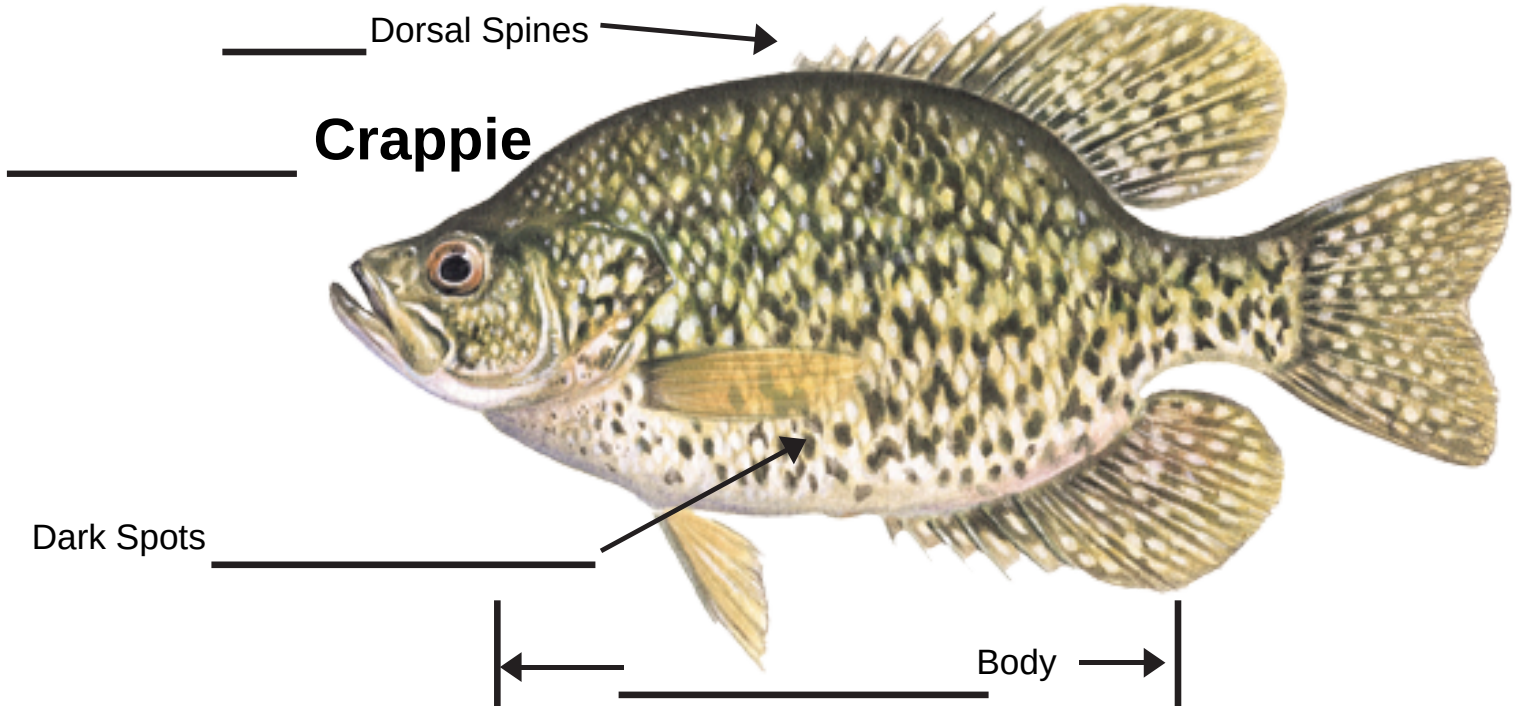


Identify the Fish

Use these labels to help you identify each type of crappie. Check your work and learn more about Black and White Crappie from our fish fact sheets. tackleshare.com/resources

- 7 Dorsal Spines
- 5 Dorsal Spines
- Dark Spots Are Irregular
- Dark Spots Form Vertical Lines
- Round Body
- Long Body
- White Crappie
- Black Crappie

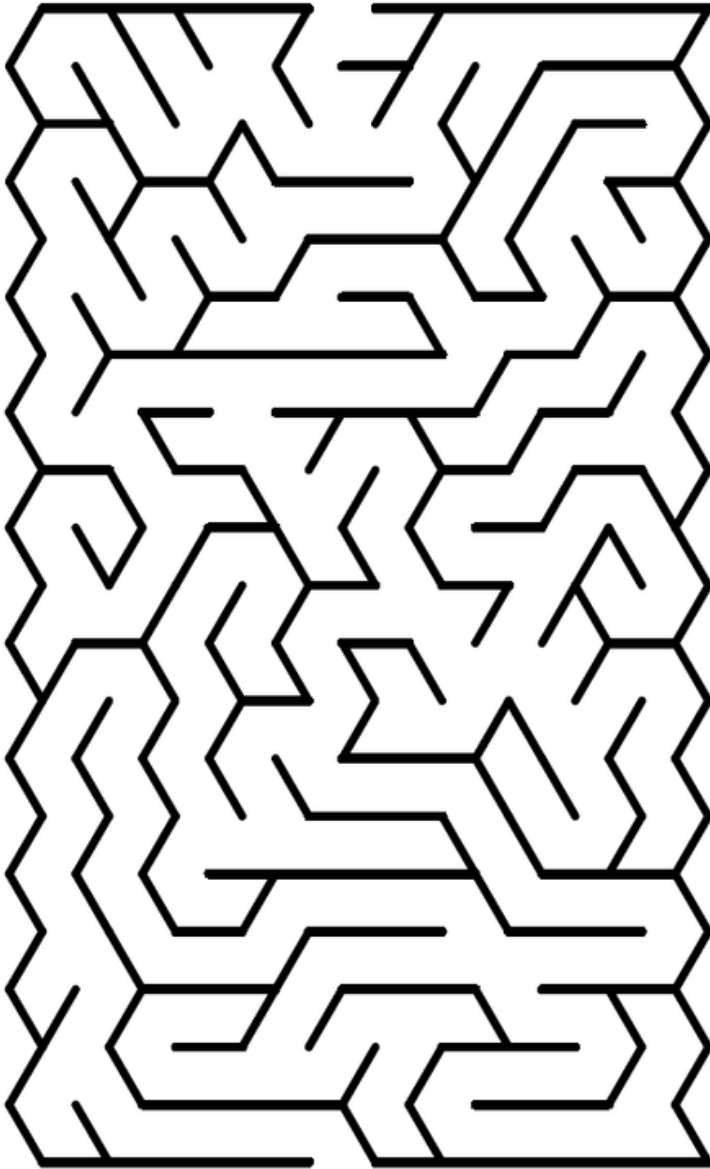


Maze



THEME

Word Search



M	J	I	G	G	I	N	G	Y	E
D	Y	M	J	J	W	D	W	D	W
Q	T	L	I	I	F	K	H	L	L
I	K	J	M	N	G	S	I	T	L
T	K	O	K	J	S	S	T	H	S
Z	U	F	G	A	B	E	E	G	L
Z	Z	F	K	H	L	F	C	M	A
K	A	L	T	I	A	I	R	T	B
N	A	B	Q	C	C	M	A	P	S
F	F	Y	P	E	K	I	P	Z	W
I	A	F	W	F	C	N	P	D	W
S	S	D	C	I	R	N	I	A	Y
H	C	S	V	S	A	O	E	N	S
F	H	G	E	H	P	W	B	K	C
R	O	P	J	I	P	S	P	V	C
Y	O	A	A	N	I	A	Z	U	S
Z	L	A	Y	G	E	C	Z	I	S
T	S	E	W	S	J	B	V	K	I



A reel-ly fishy joke!



Why do crappie swim in schools?

Because they can't walk.

- BLACK CRAPPIE
- FISH FRY
- ICE FISHING
- INSECTS
- JIGGING
- JIGS
- MINNOWS
- SCHOOLS
- SLABS
- WHITE CRAPPIE

